

# THE BURLINGTON MAGAZINE



## Drawing in Italy

Mantegna | Vasari | Barocci | Guercino | Palladio and Scamozzi

A new book on iconoclasm

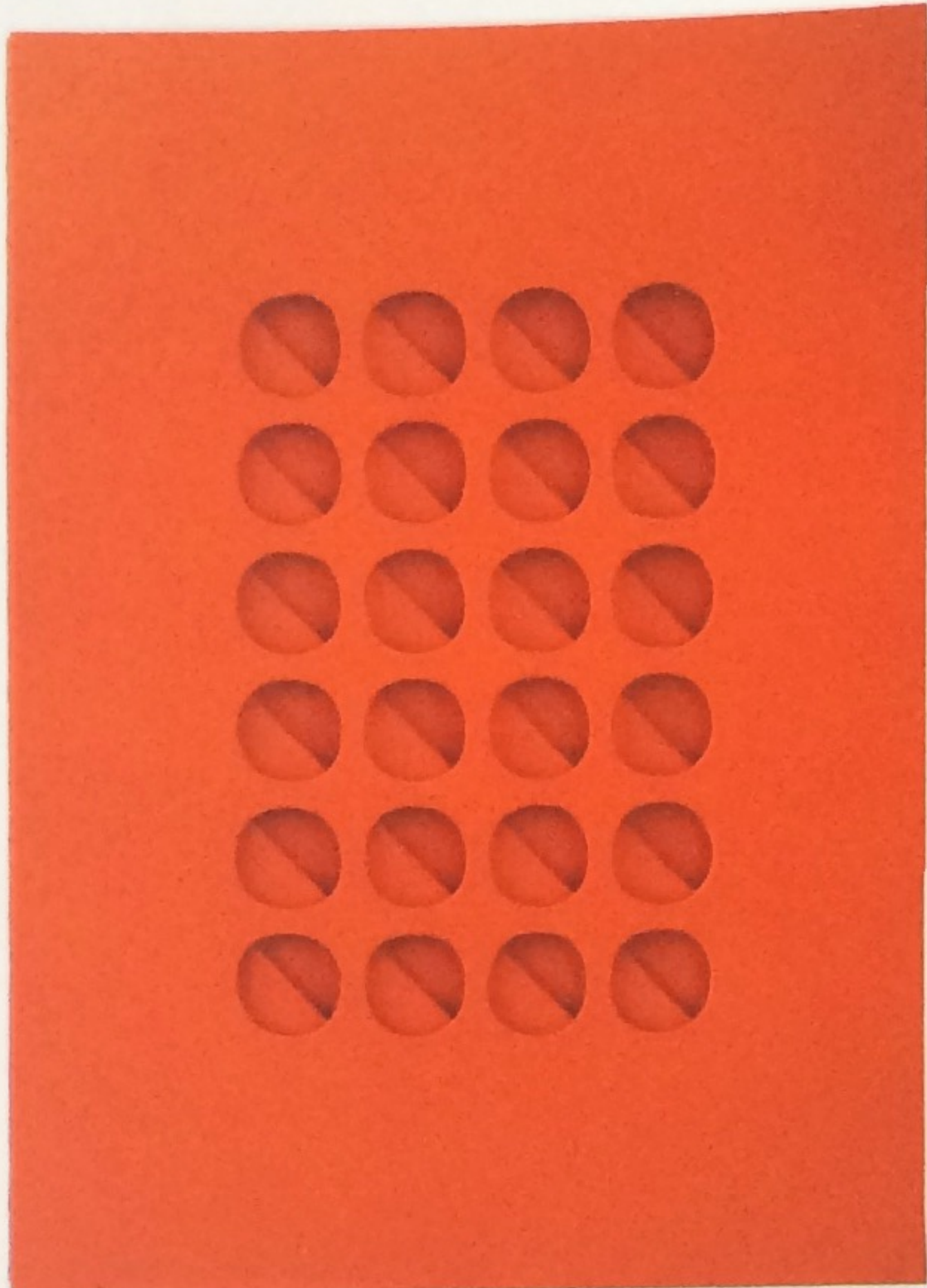
Acquisitions of works on paper at the British Museum

ld | Rubens's legacy | Velázquez | Blake | Claudel | Colquhoun and MacBryde | Conflict and photography | Post Pop

March 2015



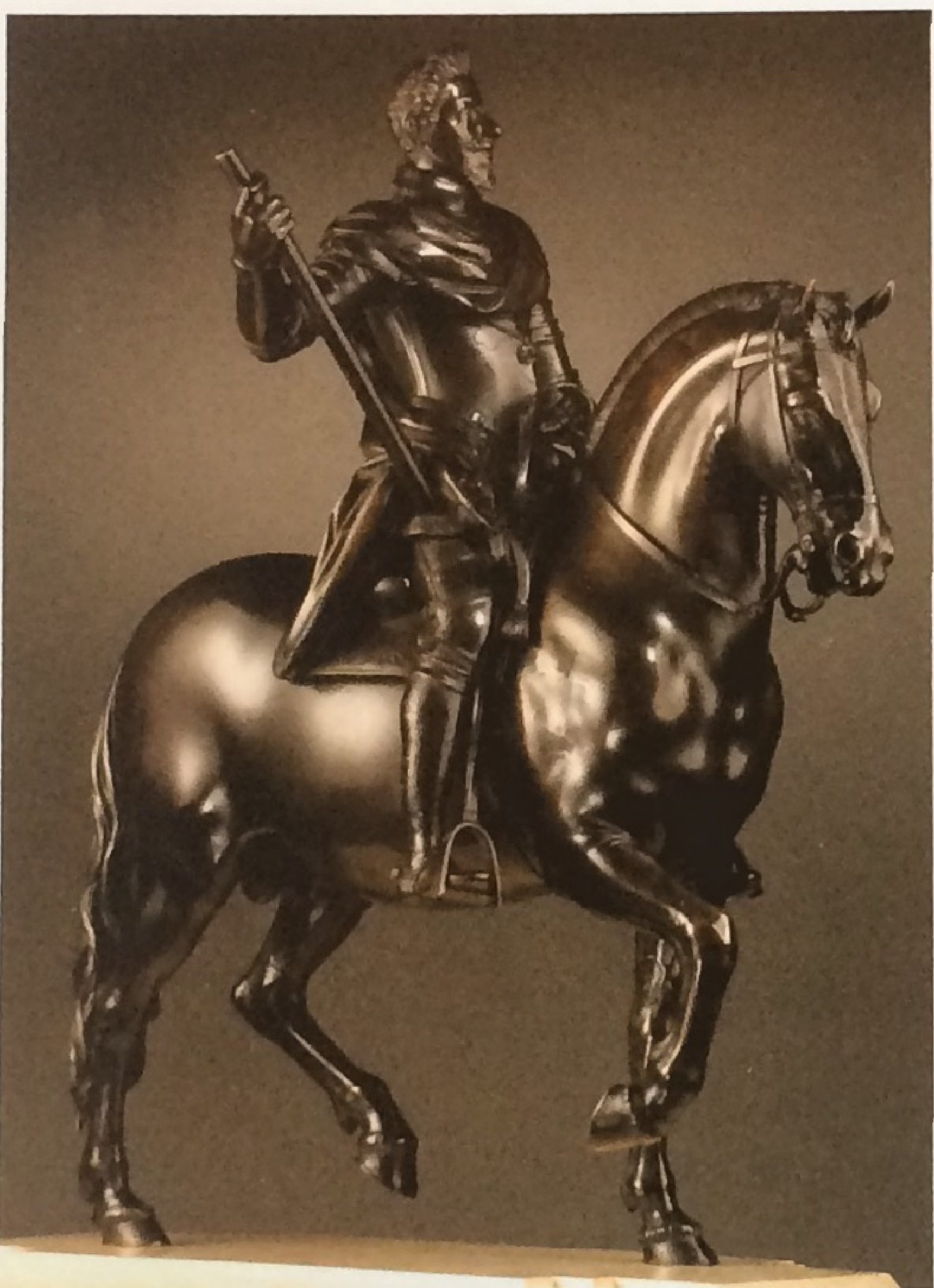
*Intersuperficie curva dal rosso*,  
by Paolo Scheggi (1941-71).  
1965. Acrylic on  
superimposed canvases,  
140 by 105 by 6 cm.  
ROBILANT + VOENA,  
LONDON AND MILAN



*The stoning of St  
Stephen*, by Aurelio  
Lomi Gentileschi  
(1556-1623/24).  
c.1603. Oil on paper  
over pen and brown  
ink mounted on  
canvas, 95 by 78 cm.  
GIACOMETTI OLD  
MASTER PAINTINGS,  
ROME



*Equestrian portrait of Carlo  
Emanuele I, Duke of Savoy*,  
by Antonio Susini  
(1558-1624). c.1620.  
Bronze, dark brown patina  
with traces of red lacquer.  
Height: 36.8 cm.  
TOMASSO BROTHERS FINE  
ART, LEEDS AND LONDON



*A capriccio of a ruined classical portico and a villa by the Venetian lagoon*,  
by Francesco Guardi (1712-92). Inscribed and dated verso 'pour le chev. de  
Thomon Officier Au Garde Suisse / 1780'. Oil on panel, 18 by 25.2 cm.  
CHARLES BEDDINGTON LTD, LONDON



*St Philip*, by the Master  
of Rimini (active in the  
second quarter of the 15th  
century). Inscribed in black  
ink verso 'Mu.St.15'.  
Alabaster, with traces of  
polychromy on the face.  
Height: 43 cm.  
DANIEL KATZ LTD,  
LONDON



*Course de taureaux*, by Pablo Picasso (1891-1973). Signed, dated and dedicated  
lower left 'Al amigo Castel Picasso/el 15 de mayo 1948'. Annotated on the reverse  
'fait à Golfe Juan .A.M./le soir du 15 mai/1948/pour Castel/15 May 1948'.  
Ink, ink wash and gouache on paper, 65 by 51 cm.  
DAVID LEVY & ASSOCIATES, PARIS AND BRUSSELS

